

KEVA

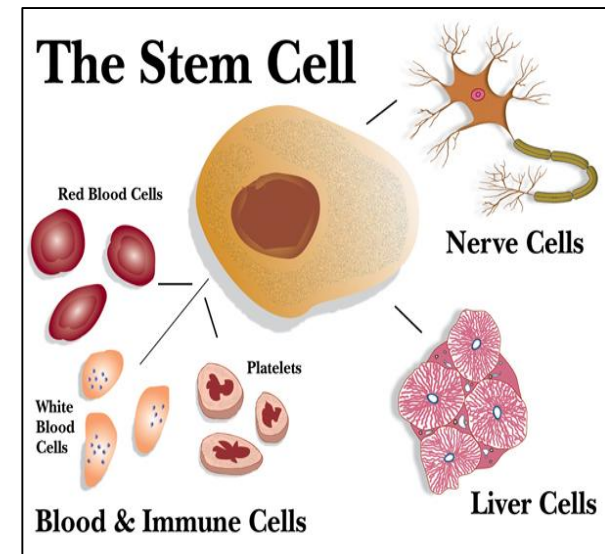
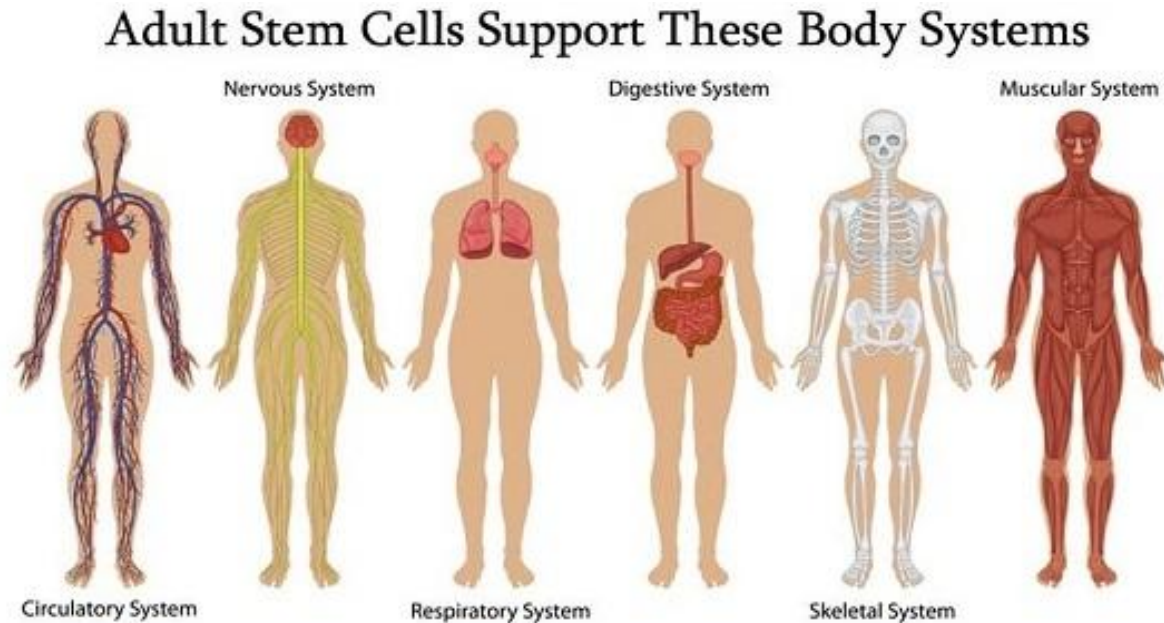
KEVA DOUBLE STEM CELL



STUDIES ABOUT STEM CELLS

According to recent scientific studies stem cells can

- Repair & rejuvenate damage cells
- Support optimal organ & tissue function
- Slow down aging



IMPORTANCE OF STEM CELLS



➤ **With age, the number & quality of stem cells gradually decrease & body become more susceptible to injury & other age-related health challenges**

IMPORTANCE OF STEM CELLS

- 
- **Excess free radicals inhibit the ability of stem cells to migrate into tissues**



KEVA DOUBLE STEM CELL



Designed to support
the natural role of
adult stem cells

KEVA DOUBLE STEM CELL

➤ An Innovative stem cell enhancing natural preparation

➤ Loaded with natural ingredients which are clinically proven to increase circulating stem cells for an extended period of time



HIGHEST QUALITY

Each batch has been manufactured & packed under extreme hygienic conditions & under the strict vigilance of quality department



Whole process goes through proper testing at every state right from the procurement of raw material to finished product to meet highest standard of quality & purity



HOW OUR PRODUCT IS BETTER



➤ Having more than 100 clinical trials

➤ Processed with Nano Technology for faster and optimum absorption



Accreditation Certificate



HRQA

HEALTHCARE, RESEARCH & QUALITY ASSOCIATION

Accreditation Certificate

Ref. No. HH584/OH

Date: 9th Sep, 2015

This is to Certify that

Keva Industries
Level 2, Prestige Omega, No. 104,
EPIP Zone, Whitefield,
Bangalore - 560066 (India).

Keva Double Stemcell

is having satisfactorily complied with requirements for accreditation pursuant to Plant StemCell extract.

Chairman
Healthcare, Research & Quality Association
6, stråket 13 sahlgrenska, Göteborg Sweden

QIES Product Award

QUALITY
INNOVATION EU
& EXCELLENCE



Certificate of Quality Innovation & Excellence

This is to Certify that

Keva Stemcell Powder
has been awarded the

With

INNOVATIVE PRODUCT AWARD 2015

for the invention of

Plant Based Stemcell Extract Effective in Cellular Regeneration

at the

Quality, Innovation & Technology Meet
held from

8th sep ~ 11th sep 2015



Quality, Innovation & Excellence Society
St. Av. De Fre, 203
Brussels 1180 Belgium

Rythmix Lab

Report No.
SC9542141-JK

TEST REPORT

Job No.: 5415KJ31

Applicant : Keva Industries
Level 2, Prestige Omega, No. 104,
EPIP Zone, Whitefield,
Bangalore - 560066 (India).

Product : DOUBLE STEM CELL


Reference standard : 1) Measurement Technique - Inductively
Coupled Plasma-Optical Emission
Spectroscopy (ICP-OES) for Determination
of Heavy Metals.
2) Mercury Arsonic Analyzer.
3) Laboratory Procedures in Nutrient Analysis
of Foods.
4) Meet USP Requirements.

Description of Sample : Received One (1) Sample of DOUBLE STEM
CELL for testing.

Date received : 20th Aug 2015

Issue Date : 16th Sep 2015

Approved by



Nazim Munnim
Technical Data Head

Verified by



Hansid Masjie
Head Testing Dept.



Sample Ref No: 5414/JU84
Date of Receiving: 19/08/2015
Date of issue: 10/09/2015

Company : Keva Industries
Level 2, Prestige Omega, No. 104,
EPIP Zone, Whitefield,
Bangalore - 560066 (India).

CERTIFICATE OF ANALYSIS

One(1) sample said to be POWDER was received from Keva industries,
SAMPLE MARKING DOUBLE STEM CELL

Discription	Result
Malus domestica & Solar Vitis	> 7 mg
Euterpe Oleracea(Acai Berry) & Vaccinium Myrtilus(Blueberry)	> 1gm
Papaya,Kiwi & Wild Blueberry extract	> 1gm
Bromelain Extract	> 0.5gm
Polygonum Cuspidatum	< 0.5gm

Note:

1) This Report is for ingredients quality testing purpose, the company shall not be responsible for any nutritional label printing on the product except with our prior acknowledgement. This product sample is safe for human consumption.

Remarks: Upon customer's request, this report has been issued more than one in original. This document can't be used for any legal purpose.

Safety Goods Services



Helen Barris
B.Sc.(Hons),
Senior Lab, Manager.

Safety Goods Services, Zurich, Switzerland

WHAT MAKES IT SO EFFECTIVE

Advanced & Unique Formula

- **Malus Domestica (Apple Stem Cells)**
 - **Solar Vitis (Grape Stem Cells)**
 - **Euterpe Oleracea (Acai Berry)**
- **Vaccinium Myrtilus (Blueberry)**
 - **Papaya, Kiwi extract**
 - **Bromelain**
- **Polygonum Cuspidatum**



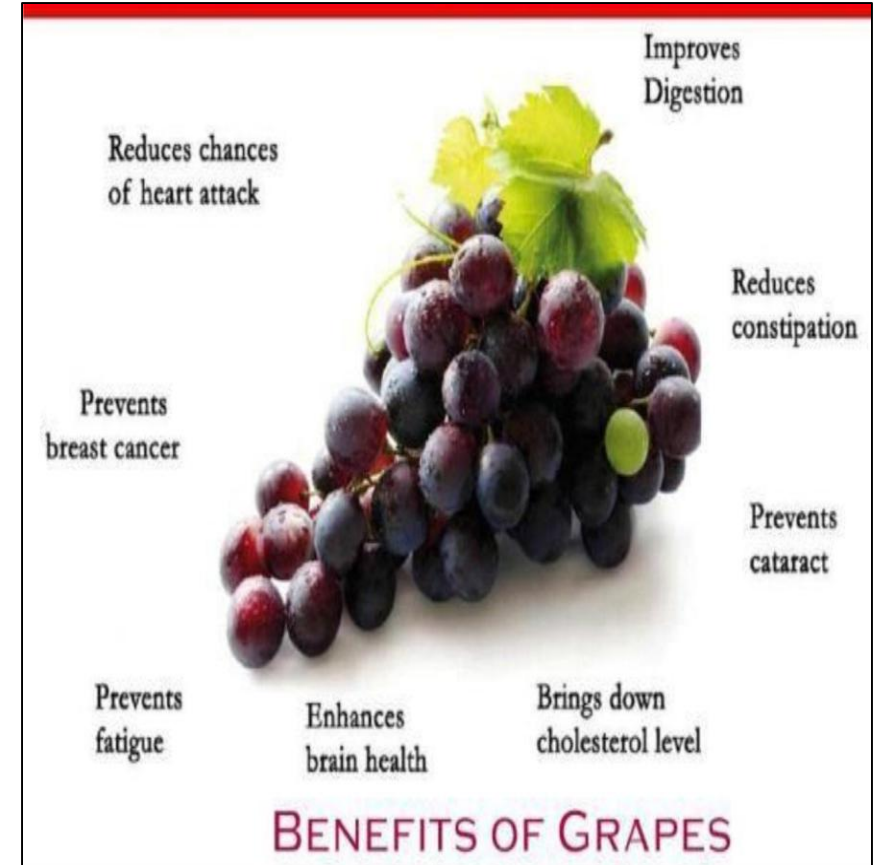
MALUS DOMESTICA (APPLE STEM CELLS)

- Protect longevity of skin stem cells
- Delay senescence of essential cells
- Combat chronological aging
- Repair damaged tissues and organs
- Activate your own skin stem cell regeneration



SOLAR VITIS (GRAPE STEM CELLS)

- Contains potent antioxidants
- Help in healthy weight loss
- Support heart health
- Help in diabetes
- Support healthy skin
- Fight aging
- Even cancer in cancer



ACAI BERRY

- Richest source of potent antioxidant & Omega Fatty Acids
- Powerhouse of essential nutrients
- Support health and normal cellular tissue growth

- ❖ Better Heart Health
- ❖ Aid in Weight Loss
- ❖ Promote Skin Health
- ❖ Help with Digestive Upset
- ❖ Immune-system Boosting
- ❖ Anti-Aging Effects
- ❖ Energy Boost
- ❖ Better blood circulation
- ❖ Improve Mental Function



BLUEBERRY

Rich in antioxidants such as anthocyanins, proanthocyanidins, resveratrol, flavonols, pterostilbene, kaempferol and tannins

- ❖ Boost up immune system
- ❖ Neutralize free radicals
- ❖ Aid in reducing belly fat
- ❖ Help promote urinary tract health
- ❖ Preserve vision
- ❖ Boost brain health
- ❖ Improve heart health
- ❖ Aid in constipation & digestion



PAPAYA AND KIWI

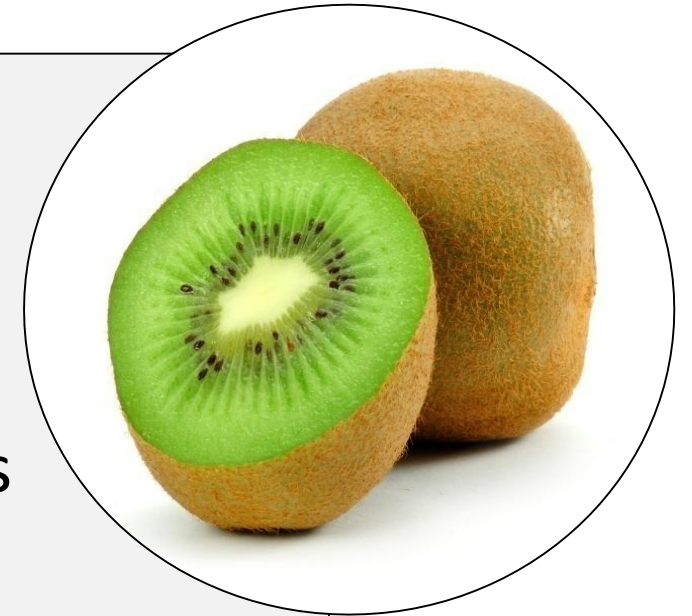


Papaya extract

Numerous scientific studies suggest that papaya can reduce the risk of heart disease, diabetes, cancer, digestion problems and many more

Kiwi extract

- Can boost the immune system
- Fight stress and aging
- Can also promote wound healing
- Support healthy bones, blood vessels
- May help to lower cholesterol
- Even help against cancer-causing cell damage



BROMELAIN AND POLYGONUM CUSPIDATUM

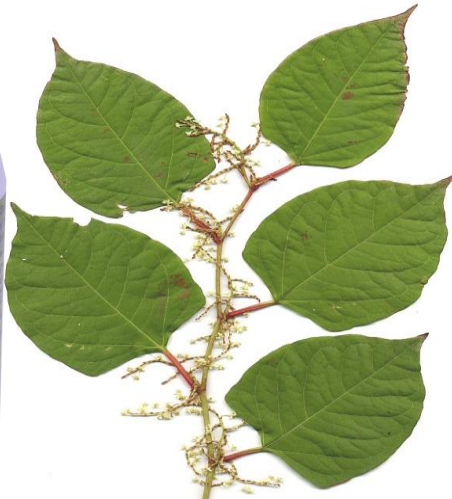
Bromelain

- Proteolytic enzyme from pineapple
- Boost immune defense
- Can help in cardiovascular disease, digestive problems and even cancer



Polygonum cuspidatum

- Traditionally used to support overall health and rejuvenation
- Scientifically known to support the release of stem cells from the bone marrow



HEALTH BENEFITS

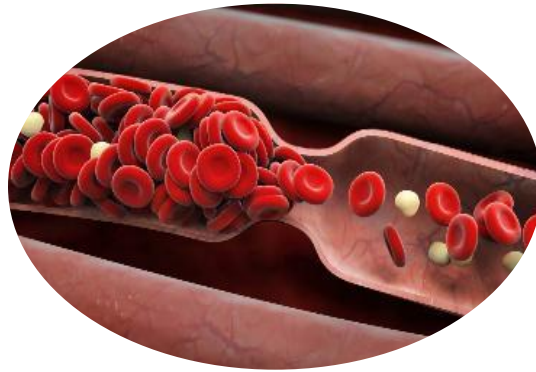


Can restore & enhance normal well-being & overall health

- Improve the effectiveness of body's own adult stem cells
- Can boost immune system
- Can prevent from counter effects of aging
- Aid in the prevention of many dreadful diseases



CARDIOVASCULAR PROTECTION



- Can lower the levels of blood cholesterol & triglycerides
- May improve the function of the endothelium (lining of the blood vessels)
- Can help prevent unwanted blood clotting, prevent from heart attacks & strokes
- Can maintain healthy blood pressure



KEVA

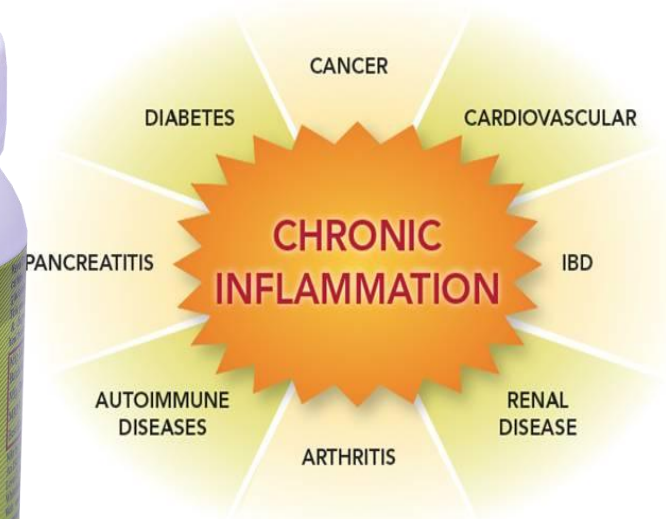
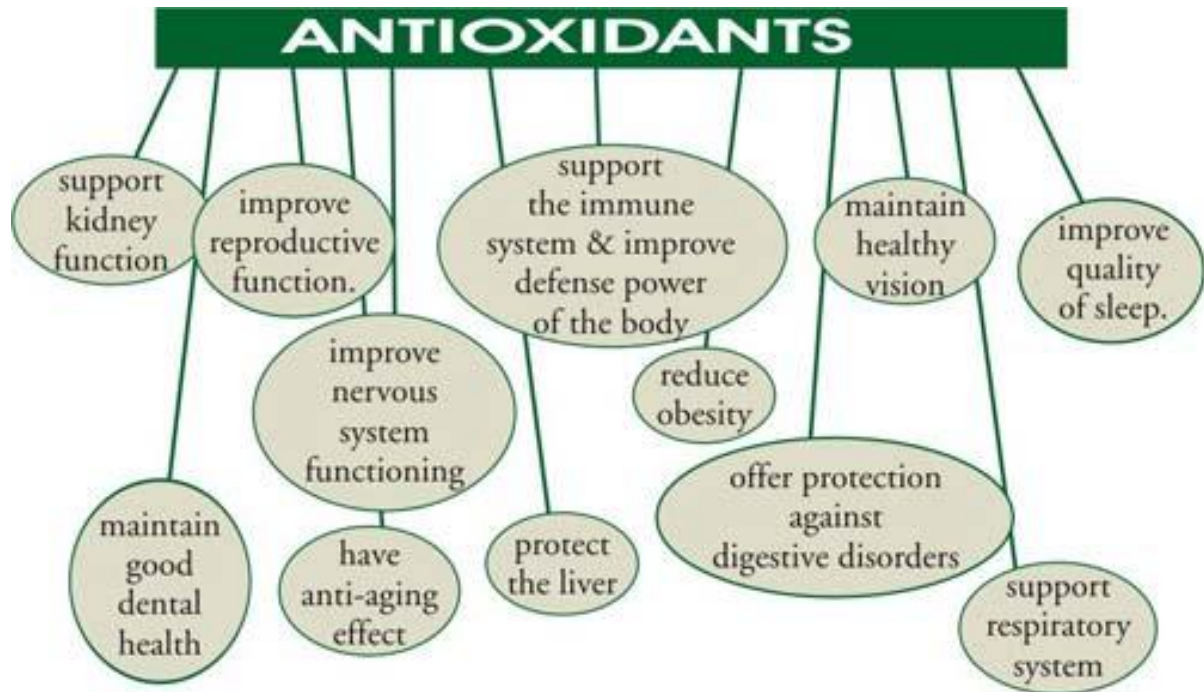
IMMUNE SUPPORT

- Can boost immune system functioning
- Help the body to resist or fight diseases & infections
- Can protect against allergies
- Have strong anti-viral & anti microbial activity



ANTIOXIDANT & ANTI-INFLAMMATORY BENEFITS

Loaded with potent Antioxidant & anti-inflammatory properties
so can help fight serious diseases



Have anti-inflammatory properties, prevent from ill effects of chronic inflammation

DIABETES

Can help to lower “bad” low-density lipoproteins while improving blood sugar control & enhancing insulin sensitivity may **reduce the risk of diabetes**



CANCER

- Has anti-tumor cell activity
- Can slow down the growth of cancer cells
- Promotes healthy breasts, colon, pancreas, & prostate

One potential contributor to cancer is oxidative damage due to free radicals, but Stem Cell Enhancer is high in antioxidants that reduce oxidative damage



SKIN BENEFITS

KEVA



Stimulate the proliferation & migration of the skin's stem cells, help to

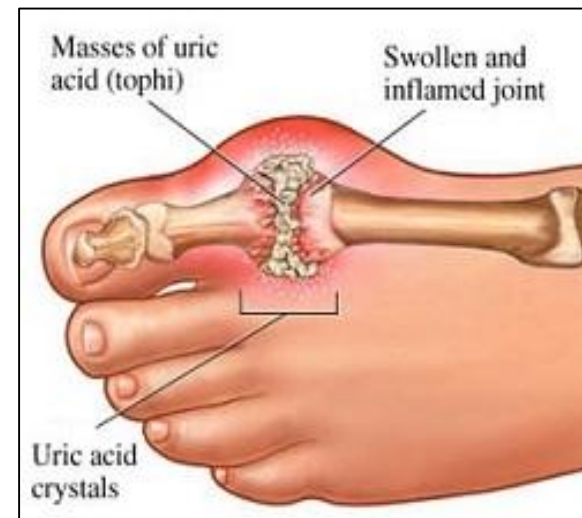
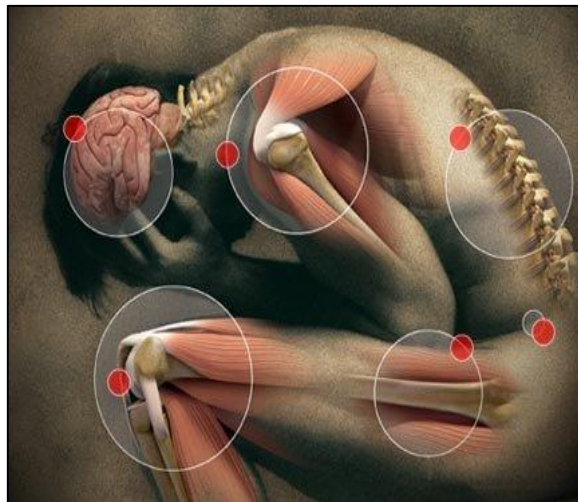
- Decrease fine line & wrinkles
- Increase moisture retention
- Increase elasticity

JOINT DISORDERS

May help to reduce inflammation & pain by inhibiting inflammatory inhibitors, may help in rheumatoid arthritis

Prevents the onset of osteoporosis

Can even help in gout



OBESITY



**Can improve metabolism
& assist in weight-
reduction**

**Enhances energy &
endurance**



KEVA

MENTAL HEALTH

Helps in better learning & focus

Can improve memory



HOW TO USE

➤ 10gm of this powder can be mixed with juice, vegetable soup or simple water etc & advised to be taken with Morning meal.

OR

➤ Can put 5 gm below tongue in Morning & Evening time before Meal.

➤ For excellent results use for 6-12months.

Safe & well tolerated at the recommended dosage



DOUBLE STEM CELL

Daily consumption of Double Stem cell, can help to support overall health & wellness



Contact

Keva Industries

Website : www.kevaind.org



Thank You

This product is not a medicine & not intended to treat, prevent or cure any disease please consult your healthcare physician.